

This archive contains the data for printing a plastic housing for a uEye LE USB 3.1 Gen 1 camera **with autofocus board**.



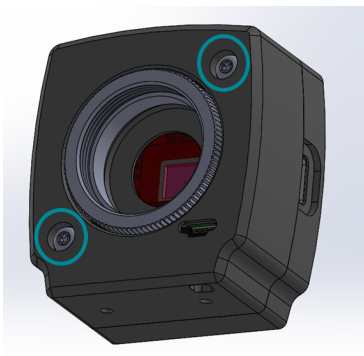
#### Restrictions

Do not use this 3D design for mill-cutting a metallic housing.  
If you use conducting materials the camera might be seriously damaged.

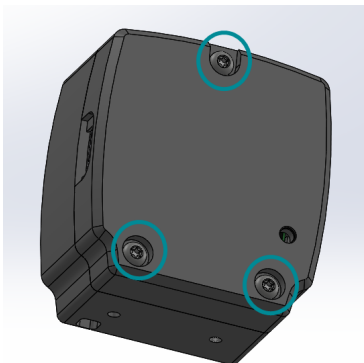
Please also see the mounting instructions for your liquid lens.

## Recommended screws

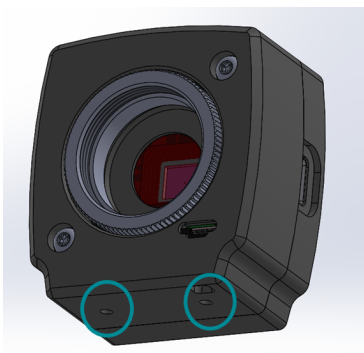
(Illustrations may differ from the original)



2 x metric screw M2.5 x 10 mm



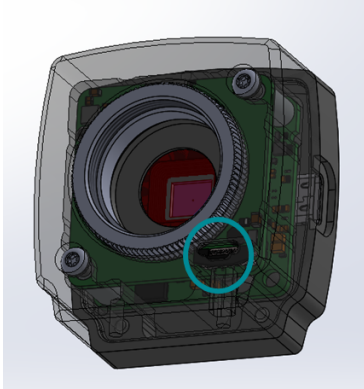
3 x self-tapping screw Ø2.5 x 12 mm up to 15 mm



2 x self-tapping screw Ø3. Maximum screw-in 6 mm.

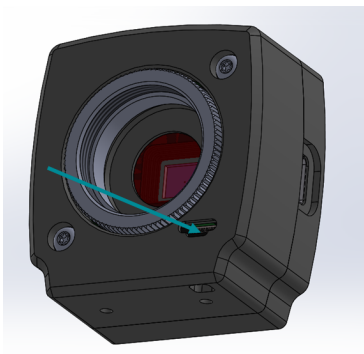
## Opening and closing the flex cable connector

(Illustrations may differ from the original)

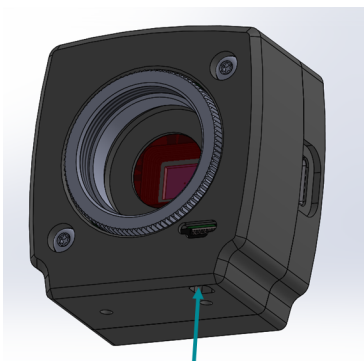


The flex cable connector is positioned at the bottom right corner behind the housing front.

To open and close the connector, you can use a small screwdriver or similar tools.



Close the connector by pushing its cap. Use the opening in the front of the housing to reach the connector with your tool.



Open the connector by pulling of its cap. Use the opening in the bottom of the housing to reach the connector with your tool.

Status: 2019-04-10